

ESPULSORE A CANNOCCHIALE NITRURATO IN POLLICI

SLEEVE EJECTOR NITRIDED IN INCHES

AUSWERFERHÜLSE, NITRIERT, IN ZOLL

EES-4P

Acciaio: Per pressofusione ed iniezione

Steel: For die casting and injection

Stahl: Für Druckguss und Spritzgiess

Durezza: Superficie > 950 Vickers - HV 0,3 Testa HRC 45±5

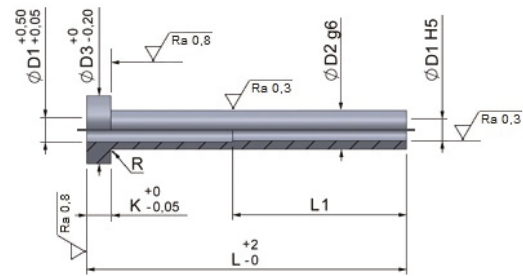
Hardness: Surface > 950 Vickers - HV 0,3 Head HRC 45±5

Härte: Oberfläche > 950 Vickers - HV 0,3 Kopf HRC 45±5

Resistenza alla trazione: 1300/1450 N/mm²

Tensile strenght: 1300/1450 N/mm²

Zugfestigkeit: 1300/1450 N/mm²



D1	D2	D3	K	R	L1	L									
						3"	4"	5"	6"	7"	8"	9"	10"		
1/8	7/32	13/32	3/16	1/32	1" 1/4	-	-	-	-	-	-	-	-	-	-
5/32	1/4	7/16	3/16	1/32	1" 3/4	-	-	-	-	-	-	-	-	-	-
3/16	5/16	1/2	1/4	1/32	1" 3/4	-	-	-	-	-	-	-	-	-	-
7/32	11/32	9/16	1/4	1/32	1" 3/4	-	-	-	-	-	-	-	-	-	-
1/4	3/8	5/8	1/4	1/32	1" 3/4	-	-	-	-	-	-	-	-	-	-
5/16	7/16	11/16	1/4	1/32	1" 3/4	-	-	-	-	-	-	-	-	-	-
3/8	1/2	3/4	1/4	1/32	1" 3/4	-	-	-	-	-	-	-	-	-	-
7/16	5/8	7/8	1/4	1/32	1" 3/4	-	-	-	-	-	-	-	-	-	-
1/2	11/16	15/16	1/4	1/32	1" 3/4	-	-	-	-	-	-	-	-	-	-

Esempio di ordinativo: D1xL **Order example:** D1xL **Bestellbeispiel:** D1xL