



PURCHINEERING

CADENAS

SETTING STANDARDS

DAS STRATEGISCHE TEILEMANAGEMENT
DER ELEKTRONISCHE PRODUKTKATALOG
DIE GEOMETRISCHE ÄHNLICHKEITSSUCHE
DIE ENGINEERING WEB-PLATTFORM



CADENAS Technologies AG

CADENAS Group

CADENAS

SETTING STANDARDS

Company &
Logo



Founded in 1992 – 14 Global Locations
100 % privately owned
Name symbolizes process chains
(CADENAS, Spanish for “chains”)

About myself



Jürgen Heimbach



Employees

~ 300 worldwide

Markets



Growth 2011 17% exp.
~ 450,000 Licences and > 600 Catalogs



CADENAS Products

Connection between Maker and Taker

CADENAS

SETTING STANDARDS

KOMPONENTENHERSTELLER



ABB

afag

AMF

DANLY

DE-STA-CO
Metallwerkzeuge

DIRAK

FESTO

FIBRO

Form

igus

Kipp

KSB

LAPP GROUP

MADLER

MISUMI

mk

MOELLER
An Eaton Brand

norelem

- 600 Catalog Suppliers of different industries working with CADENAS
- 1200 Man Years !

75% of TOP 25 most preferred suppliers are working with CADENAS



INDUSTRIE



battenfeld-cincinnati

DÜRR

EcoClean

POEN
SMS group

KUKA

KUKA Systems GmbH

LIEBHERR

> 10.000 Companies with
> 450.000 Users use Enterprise Parts Management

154 belonging to Germany's TOP 1000
World Market Leaders

Access To 2,5 Mn Downloaders and
prospective Customers





PURCHINEERING

CADENAS

SETTING STANDARDS



PURCHINEERING





Situation Today

(Strategic Purchasing)

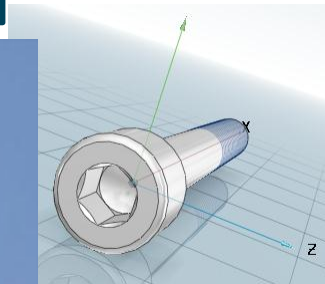
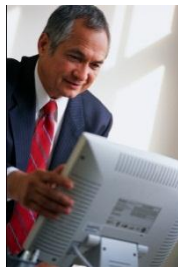
CADENAS

SETTING STANDARDS



CUSTOMER

REAL
PURCHASER



DIGITAL
ENGINEERING





Where costs can be permanently reduced?

CADENAS

SETTING STANDARDS





Motivation for Parts Management

“Getting a grip on the parts world”

CADENAS

SETTING STANDARDS

| Source | Object of Investigation | Year | Costs in € |
|-------------|--|------|-----------------------|
| Bernhard | Implementation of a new part into mechanical engineering | 1975 | 500,- € |
| Hichert | Opening and maintenance of part | 1986 | 850,- € |
| Pflicht | Management costs for a new part | 1988 | 500,- € |
| Häusele | Management costs per part | 1989 | 1.261,- € |
| Lamatsch | Master data costs per part & year | 1992 | 500,- € |
| IGS | Average costs for management of part | 1992 | 1.200,- € |
| Steiner | Total of costs incurred per article number & year | 1995 | 750,- € |
| Ehrlenspiel | Management of purchased part | 1998 | 1.500,- bis 2.000,- € |

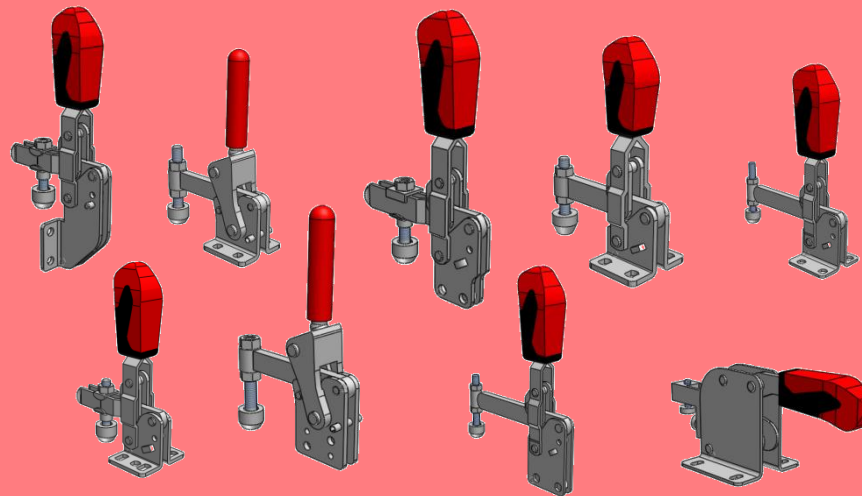


What's better for ENGINEERING, PURCHASING, SUPPLIER ?

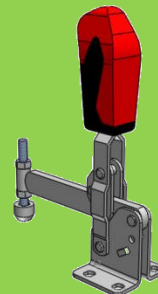
CADENAS

SETTING STANDARDS

**1000
different
parts ?**

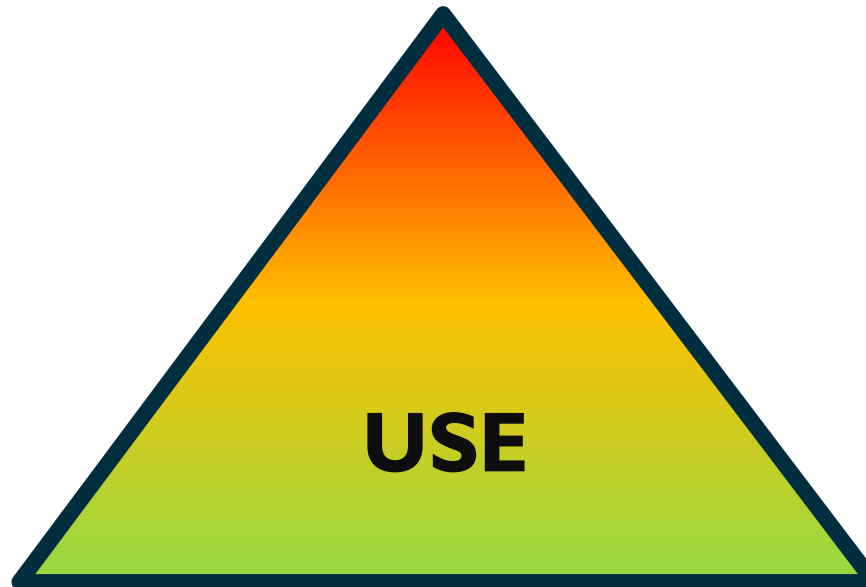


**1000
the same part ?**





Supplier of commercial parts
Higher Quantities = Higher Margins



Purchaser

Higher quantity =
Higher discount

Engineer

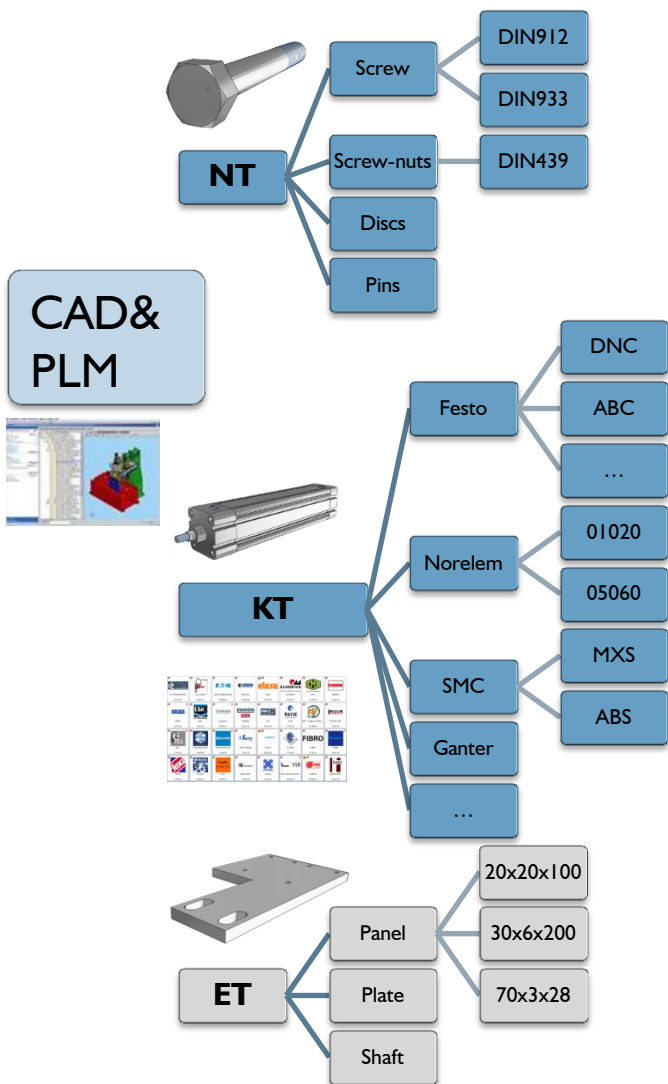
Re-use =
Less time to learn



Added Value of Standard & Supplier Parts

CADENAS

SETTING STANDARDS



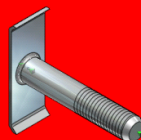
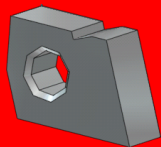


Parts Analysis Functions

Internal and External Partsworld is Required !

CADENAS

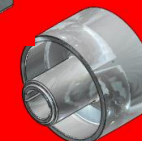
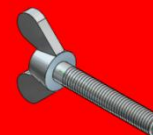
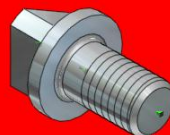
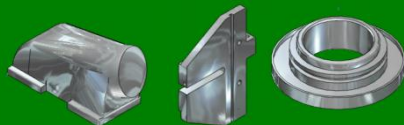
SETTING STANDARDS



INTERNAL company
parts world
PDM+ERP
(e.g. 100.000 parts)

**For Multiple Analysis
You Need The Overview
Over**

INTERNAL and EXTERNAL Partsworld



Projektauswahl
 Schlagwortsuche: Suchbegriff(e) für Volltextsuche in allen Katalogen
 Herstellerfilter: Herstellername
 Kataloge: - Norm - CSN / STN Muttern CSN 02 1431

- Kataloge Klassen Suche Favoriten Verlauf
- Kataloge
 - Architektur Nemetschek -
 - Bett -
 - CADENAS Bausteine -
 - Camst 150 -
 - GeoSearch -
 - GeoSearch2 -
 - Haus Kongigurator/Texturen -
 - Interactive Sales Konfigurator -
 - Konturen -
 - Negativ Koerper -
 - Norm -
 - Smiley -
 - Spezialschrauben -
 - Topologie Katalog -
 - Videos -
 - Wii -
 - A.Borrelly
 - A4Hydrauliek
 - ABB
 - ABB Automation
 - ABB Control Products
 - ABB-MC
 - Accurate Inc.
 - ACE Stoßdämpfer
 - ACME
 - Advantec
 - Aerospace
 - Afag
 - Agathon
 - agru
 - AHP Merkle
 - Albion
 - Alenia Aeronautica
 - Alfa Laval

Rolle wählen...

| Rolle |
|------------------------------|
| Administrator |
| Berlin |
| Berlin (Anzeige reduziert) |
| Muenchen |
| Muenchen (Anzeige reduziert) |

OK Abbruch

Roles & Rights Maverick Buying

| | | | |
|------------------------------|------------------------------|------------------------------|------------------------------|
| CSN 02 1411 mm 28.03.2011 | CSN 02 1412 mm 28.03.2011 | CSN 02 1412 mm 28.03.2011 | CSN 02 1431 mm 28.03.2011 |
| CSN 02 1461 mm 28.03.2011 | CSN 02 1462 mm 28.03.2011 | EN 1661 mm 29.03.2011 | EN 1664 mm 29.03.2011 |
| ISO 10512 mm 29.03.2011 | ISO 10513 mm 29.03.2011 | ISO 4032 mm 29.03.2011 | ISO 4033 mm 29.03.2011 |
| ISO 7040 mm 29.03.2011 | ISO 7042 mm 29.03.2011 | ISO 7719 mm 29.03.2011 | ISO 8673 mm 29.03.2011 |

CSN / STN CSN 02 1431



Letzte Änderung: 29.03.2011 15:58:22
 Kategorien: Montagetechnik, Befestigung, Verbindungstechnik, Normteil
 Sprachen: 



Bezeichnung: Geschlossene Muttern
 Einheit: mm
 Letzte Änderung: 28.03.2011 14:15:12
 Klassifikationen: Muttern
 PCon: Muttern

File Edit ERP Ansicht Tabelle Konfigurator Extras Fenster ?

BMP An CAD übertragen PS2-V2 2D

Teileauswahl Teileansicht 2D-Ableitung Verschraubung Textsuche Skizzensuche (2D) Geometrische Suche (3D) Topologiesuche Anwenderportal

Projektauswahl

Schlagwortsuche: in allen Katalogen

Hersteller filter: Herstellername

Search Engine

Kataloge

Version

Kataloge Klassen Suche Filter

| Kategorie | Symbole | Details |
|-----------------------------|-----------------------------------|--|
| Kataloge | | |
| - Architektur Nemetschek | - Architektur Ne... 24.10.2007 | - Bett - - CADENAS Baust... 23.07.2003 |
| - Bett - | - Bett - | - Camst 150 - 23.08.2010 |
| - CADENAS Bausteine - | - CADENAS Baust... | - GeoSearch - 08.02.2006 |
| - Camst 150 - | - Camst 150 - | - GeoSearch2 - 22.09.2011 |
| - GeoSearch - | - GeoSearch - | - Haus Kongigura... 01.10.2003 |
| - GeoSearch2 - | - Haus Kongigura... | - Interactive Sale... 17.02.2010 |
| - Haus Kongigurator/Textu | - Interactive Sale... | - Konturen - 17.06.2011 |
| - Interactive Sales Konfigu | - Konturen - | - Negativ Koerper... 30.04.2002 |
| - Konturen - | - Negativ Koerper... | |
| - Negativ Koerper - | | |
| - Norm - | | |
| - Smiley - | | |
| - Spezialschrauben - | | |
| - Topologie Katalog - | | |
| - Videos - | | |
| - Wii - | | |
| A.Borrelly | | |
| A4Hydrauliek | | |
| ABB | | |
| ABB Automation | | |
| ABB Control Products | | |
| ABB-MC | | |
| Accurate Inc. | | |
| ACE Stoßdämpfer | | |
| ACME | | |
| Advantec | | |
| Aerospace | | |
| Afag | | |
| Agathon | | |
| agru | | |
| AHP Merkle | | |
| Albion | | |
| Alenia Aeronautica | | |
| Alfa Laval | | |
| Alfatec | | |
| ALSTOM | | |
| alubel | | |
| ALUKON | | |
| AMF - ANDREAS ... | | |
| Aoki (Mecha Tech... | | |
| APORE | | |
| ARNOLD | | |
| Asahi | | |
| Assag | | |
| astec | | |
| Avdel | | |
| AVM Automation | | |
| Baldor Dodge Rel... | | |
| BALLUFF | | |
| BANDO | | |

- Language Independent
- Sketch

Kataloge Klassen Suche Favoriten Verlauf

Symbole Details

| | | | | | |
|----------|-----|-----------------------|-----------------------|---------------------|------------------------|
| | | | | | |
| Kataloge | ... | Teil 1: Normteile ... | Teil 2: Vorrichtun... | Inhalt des CAD-K... | copyright Copyright |
| | | 14.07.2011 | 14.07.2011 | 03.06.2011 | 18.12.2008 |

Ganter

Letzte Änderung: 14.07.2011 10:13:35

Kategorien: Spanntechnik, Bedienteil, Gelenkwelle, Fluidtechnik, Griff, Verbindungstechnik, Rohrverbindungen, Positioniersystem, Normteil, Gelenkkopf

Sprachen:

Niederlassungen:

Otto Ganter GmbH & Co.KG

• Graph Search

Suchen

Suchen | Vergleichen

Suchoptionen

Ordner: -GeoSearch 500 Parts - | Text- und Variablen | Skizze (2D) | **Geometrie (3D)** | Topologie

Geometrische Suche ausführen

Markiertes Teil als Suchkriterium benutzen

3D-Datei als Suchkriterium benutzen

Suchvorlage wählen

Suchvorlagen bearbeiten

Schnelle Suche

Standard-Suche

Umfassende Suche

Suchergebnisse unter 52 % ausblenden

Maximale Anzahl der Suchergebnisse: 70

Suche starten | **Graphensuche** | 0% | Anzahl: 0 | Schließen

Suchergebnisse

Selektierte Bauteile laden und vergleichen

Schließen

Teileausw

_geo_500_p

Tabelle | Liste

1

NB=_geo_



Keep multiplicity of components under control !

CADENAS

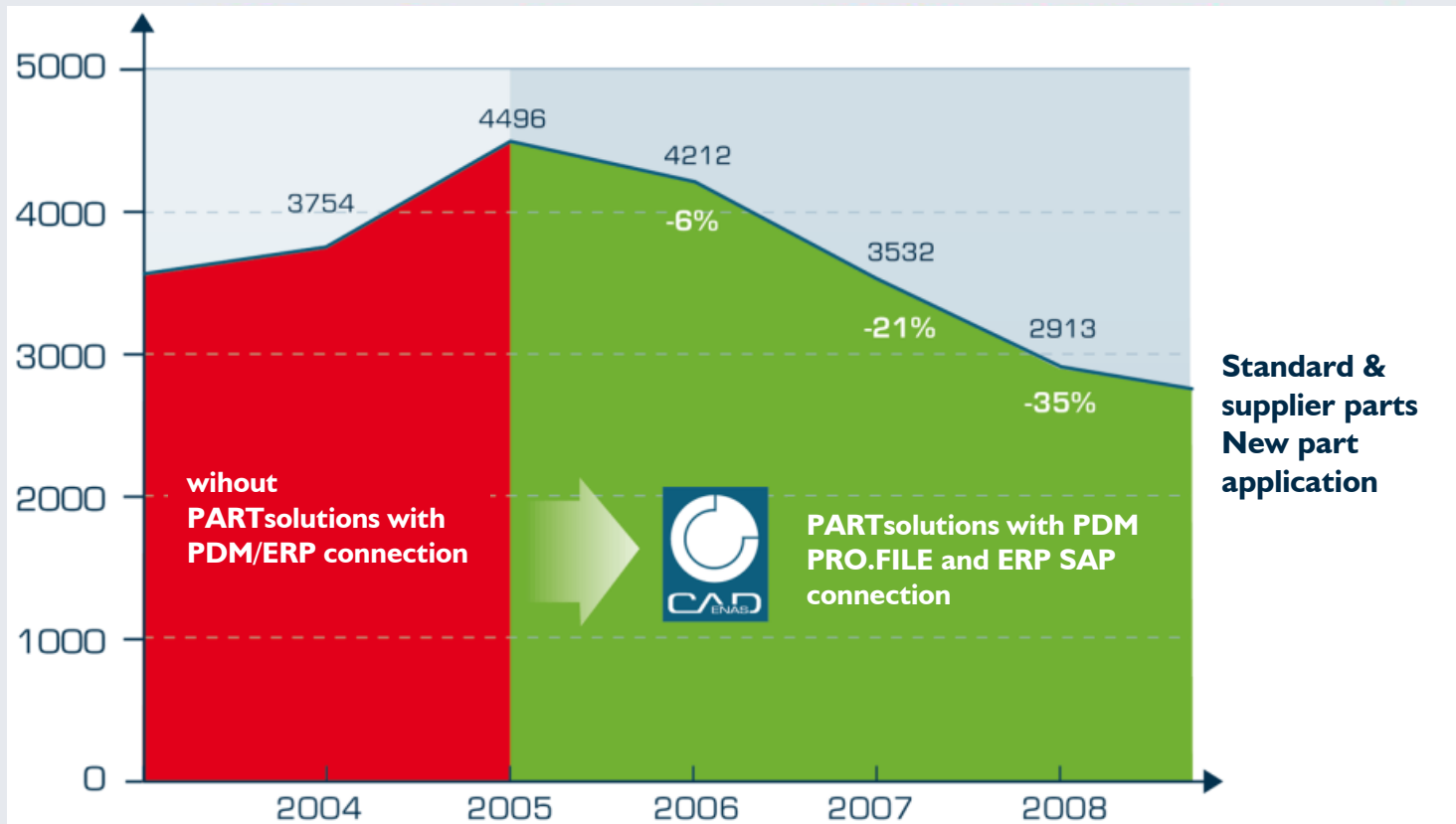
SETTING STANDARDS



1583 new master data less x 200 EUR = 316,600 € savings!

Current Savings

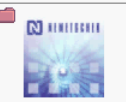
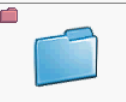

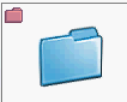
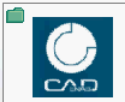



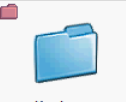



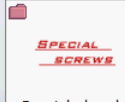
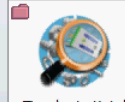
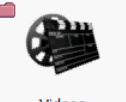

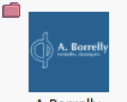
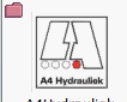




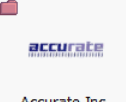
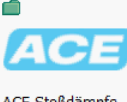

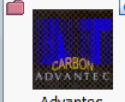
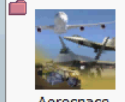

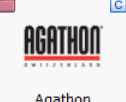

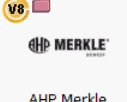

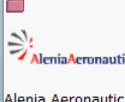

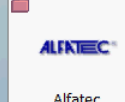
Cost reduction through standard and supplier parts management in special fields:



Projektauswahl
Schlagwortsuche: Suchbegriff(e) für Volltextsuche in allen Katalogen
Hersteller filter: Herstellername
Kataloge

Alternative Suppliers

- Kataloge
 - Klassen
 - Suche
 - Favoriten
 - Verlauf
- Kataloge
 - Architektur Nemetschek -
 - Bett -
 - CADENAS Bausteine -
 - Camst 150 -
 - GeoSearch -
 - GeoSearch2 -
 - Haus Kongigurator/Texturen -
 - Interactive Sales Konfigurator -
 - Konturen -
 - Negativ Koerper -
 - Norm -
 - Smiley -
 - Spezialschrauben -
 - Topologie Katalog -
 - Videos -
 - Wii -
 - A.Borrelly
 - A4Hydrauliek
 - ABB
 - ABB Automation
 - ABB Control Products
 - ABB-MC
 - Accurate Inc.
 - ACE Stoßdämpfer
 - ACME
 - Advantec
 - Aerospace
 - Afag
 - Agathon
 - agru
 - AHP Merkle
 - Albion
 - Alenia Aeronautica
 - Alfa Laval

| Symbole | Details | | | | | |
|--|--|---|--|---|--|---|
|  - Architektur Ne... 24.10.2007 |  - Bett - |  - CADENAS Baust... 23.07.2003 |  - Camst 150 - 23.08.2010 |  - GeoSearch - 08.02.2006 |  - GeoSearch2 - 22.09.2011 |  - Haus Kongigura... 01.10.2003 |
|  - Interactive Sale... 17.02.2010 |  - Konturen - 17.06.2011 |  - Negativ Koerper... 30.04.2002 |  - Norm - 08.11.2011 |  - Smiley - 08.11.2011 |  - Spezialschraub... 12.04.2010 |  - Topologie Katal... 28.03.2011 |
|  - Videos - 02.09.2010 |  - Wii - 18.09.2009 |  A.Borrelly 08.11.2010 |  A4Hydrauliek 08.11.2010 |  ABB 27.05.2011 |  ABB Automation 09.05.2011 |  ABB Control Prod... 08.07.2011 |
|  ABB-MC 09.11.2010 |  Accurate Inc. 20.04.2011 |  ACE Stoßdämpfe... 11.11.2010 |  ACME 08.11.2010 |  Advantec 14.02.2011 |  Aerospace 25.09.2008 |  Afag 21.06.2011 |
|  Agathon 28.06.2011 |  agru 23.10.2010 |  AHP Merkle 20.04.2011 |  Albion 13.06.2011 |  Alenia Aeronautic... 29.09.2008 |  Alfa Laval 29.06.2011 |  Alfatec 08.11.2010 |

Cost Mockup Report

Übersicht Ergebnisse Preisanfrage versenden



19 von 34 Teilen (55%) haben Treffer geliefert

Suchteile: fav/favor/et
Vergleichsteile: cat

ERP-Status:

mehr >>

10.



Preis-anfrage:

Katalog: - GeoSearch -
Bezeichnung: 023023002.catprt
Norm-Nummer: 023023002
Norm-Titel:
Preis: 2,93 €
ERP-Status:



Preis-anfrage:



Katalog: EMILE MAURIN - Produits Métallurgiques
Bezeichnung: Emile Maurin C35ETR180 L=3000
Norm-Nummer: Modèle C35 ETR
Norm-Titel: ACIER DE CONSTRUCTION NON ALLIE C35 CALIBRE A FROID - ROND
Preis: -€
Übereinstimmung:
ERP-Status:



Preis-anfrage:



Katalog: GB Standards
Bezeichnung: Studs GB 897 BM2X100
Norm-Nummer: GB 897-88 B
Norm-Titel: Double end studs-bm=1d
Preis: -€
Übereinstimmung:
ERP-Status:



Preis-anfrage:



Katalog: DIN
Bezeichnung: Gewindebolzen DIN 976-2 MFS 7x40
Norm-Nummer: DIN 976-2
Norm-Titel: Gewindebolzen, metrisches Festsitzgewinde

Teil suchen... Drucken... Berichtordner öffnen (HTML) Exportieren Schließen

| | | | | | | |
|-----------|------------|------------|------------|------------|------------|------------|
| 023027006 | 08.02.2006 | 08.02.2006 | 08.02.2006 | 08.02.2006 | 08.02.2006 | 08.02.2006 |
| 023027008 | | | | | | |

Version






- 014
- 006
- 031
- 006
- 011
- 006
- 002

Request 4 Proposal

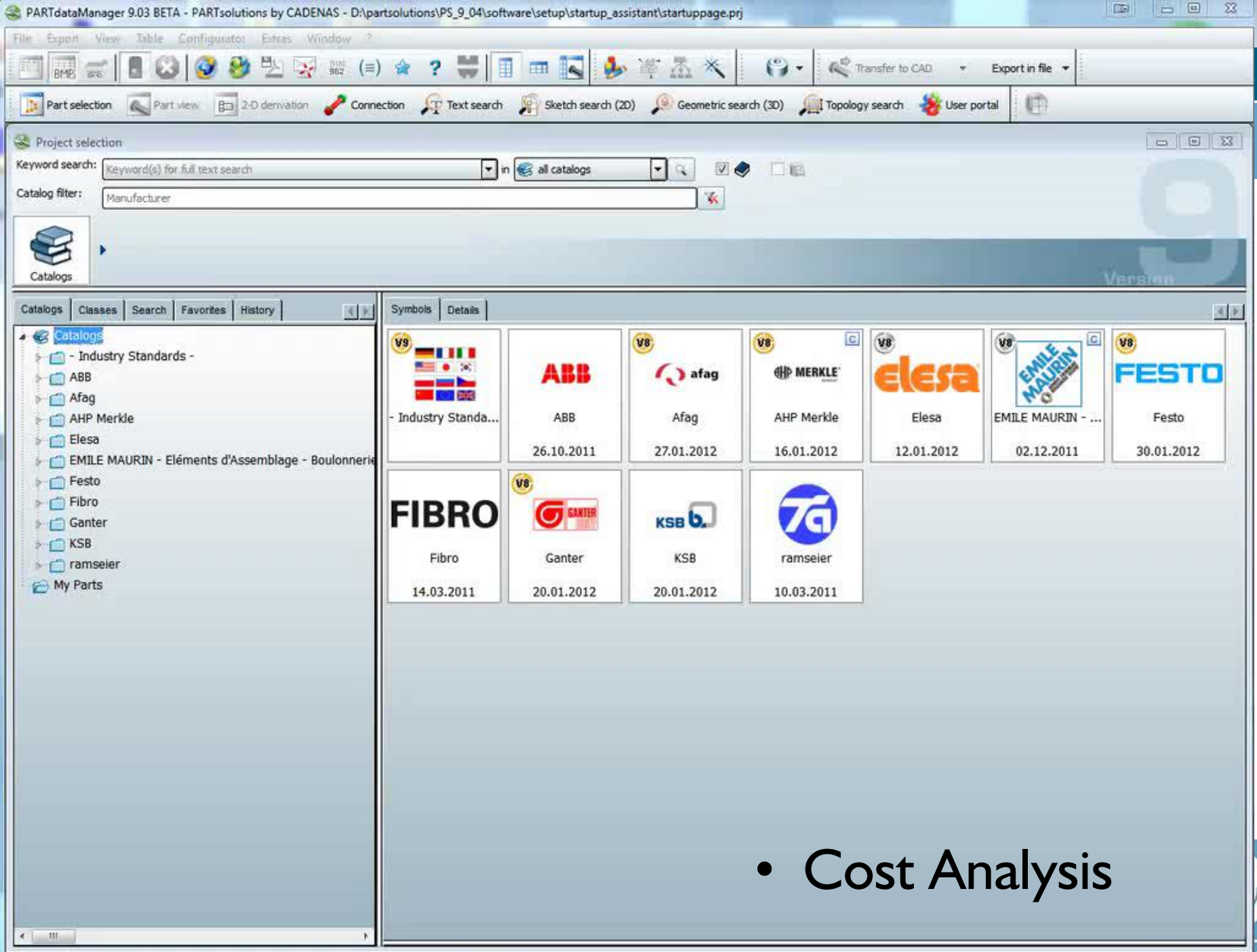


Preise vergleichen

Suchbegriff: Land: Suche ausführen

| Bild | Titel | Beschreibung | Autor | M... |
|---|--|--|---------------|------|
|  | Bohrschrauben DIN 7504 O mit Kreuzschlitz Senkkopf Neu - 4008874138511 | Galvanisch verzinkt Stärke in mm: 4,2 Länge ohne Kopf in mm: 16 Paket Inhalt Stück: 100 | Mercateo.com | Ne |
|  | Bohrschrauben DIN 7504 O mit Kreuzschlitz Senkkopf Neu - 4008874138627 | Galvanisch verzinkt Stärke in mm: 4,8 Länge ohne Kopf in mm: 50 Paket Inhalt Stück: 50 | Mercateo.com | Ne |
|  | Uniqat Bohrschrauben Din 7504 - O | Uniqat Bohrschrauben Din 7504 - O Uniqat Bohrschrauben Din 7504 - O | Gimahhot GmbH | Gin |
|  | Bohrschrauben DIN 7504 - O mit Kreuzschlitz - Senkkopf - | Bohrschrauben DIN 7504 - O mit Kreuzschlitz - Senkkopf - : Bohrschrauben DIN 7504 - O mit Kreuzschlitz - Senkkopf - : - Galvanisch verzinkt Stärke in mm: 3,9 Länge ohne Kopf in mm: 16 Paket Inhalt Stück: 100 (Lieferant: ShoppingKarl.de) | Kauflux | |
|  | Bohrschraube DIN 7504-O 4,8x70 zn E-NORMpro | DIN 7504 Form O (ehemals Form P), ,Bohrschrauben mit Blechschraben-,gewinde n. DIN 7900, galv. verzinkt ,Senkkopf, Kreuzschlitz H | BSG Geräte | |

Schließen



- Cost Analysis

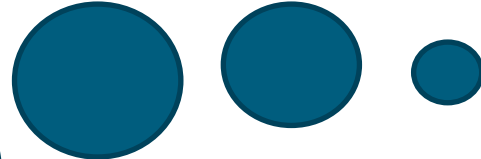
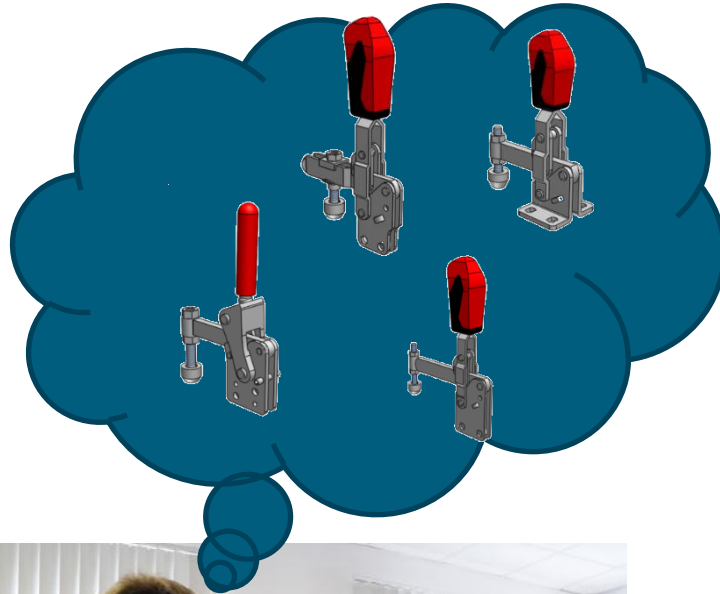


PARTstatistic – Shift into the parts and visions of engineers

User behavior and statistics

CADENAS

SETTING STANDARDS



Erstellungsdatum 14.06.2010
basiert auf eCATALOCsolutions



Top Produkte

| | | |
|--|--|----------------------------------|
| Zylinderschraube DIN 912 M1.4x2 | | |
| ProdId: | catalogs/hom/din_en_isolschraubenzylinderschrauben/din_912.prj | Anzahl Downloads |
| Zylinderschraube DIN 912 M1.4x2 | | 134 |
| Zylinderschraube DIN 912 M1.6x6 | | |
| ProdId: | catalogs/hom/din_en_isolschraubenzylinderschrauben/din_912.prj | Anzahl Downloads |
| Zylinderschraube DIN 912 M1.6x6 | | 68 |
| LECHLER_60013056AC | | |
| ProdId: | catalogs/Search/mkfd_130_283.prj | Anzahl Downloads |
| LECHLER_60013056AC | | 54 |
| Scheibe DIN 125-1 A1.7 | | |
| ProdId: | catalogs/hom/din_en_isolzubehoerscheiben/din_125_tell_1_a.prj | Anzahl Downloads |
| Scheibe DIN 125-1 A1.7 | | 50 |
| Zylinderschraube DIN 912 M8x20 | | |
| ProdId: | catalogs/Search/din_912.prj | Anzahl Downloads |
| Zylinderschraube DIN 912 M8x20 | | 49 |





Other Advantages

Clean master data input

Permanent Cleansing

CADENAS

SETTING STANDARDS

Material H01.094397 anzeigen

Zusatzdaten OrgEbenen

Grunddaten 1 Grunddaten 2

Material: HR1 094397 Augenschraube M 20X120 1 SA-193M-B8M CL 1

Allgemeine Daten

Benennung: Augenschraube

Basismengeneinheit: ST

Warengruppe: 100106

Werkstoffnummer: 1_SA-193M-B8M CL 1

Werkstoffname: ASME

Werkstoffkurzname: SA-193M-B8M CL1

Abmessungen

Druttogewicht: 0,000

Nettogewicht: 0,000

Volumen: 0,000

Größe/Abmessung: M 20X120

Größe: M 20 x L 120

Die Norm- & Zukauf-teile Kataloge von PART-solutions beinhalten viele Suchmerkmale, welche sowohl für die Stammdaten-erfüllung als auch Stammda-tenbereinigung verwendet werden können.

Diese Grunddaten werden automatisch bei Kunde VOITH mit PARTSolutions Attributen befüllt

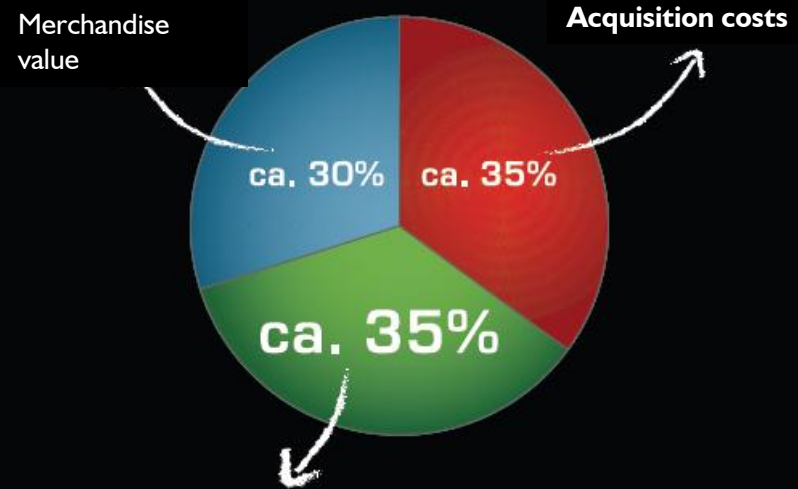
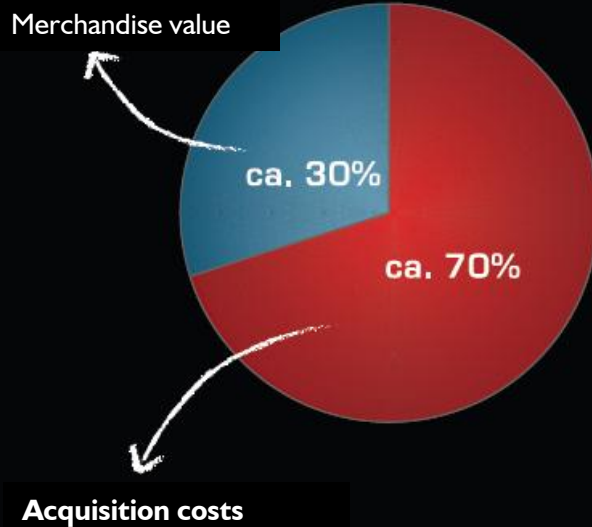




Supplier and Parts Consolidation

CADENAS

SETTING STANDARDS



Digital C-part management
= CADENAS

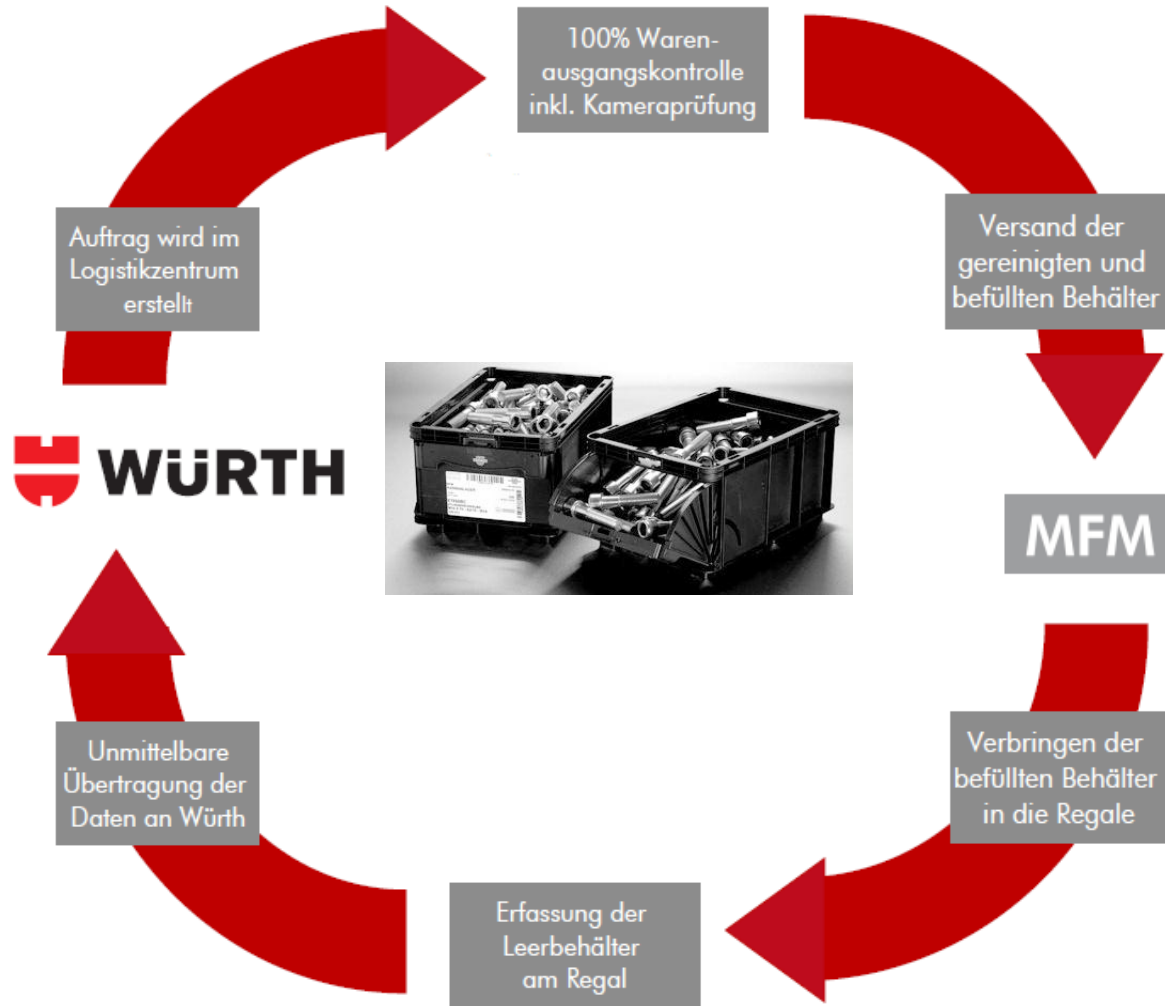
Real C-part management
= Würth

through supplier and
parts consolidation!

"Without digital parts consolidation a real parts and supplier consolidation is not possible!"



The Kanban Cycle



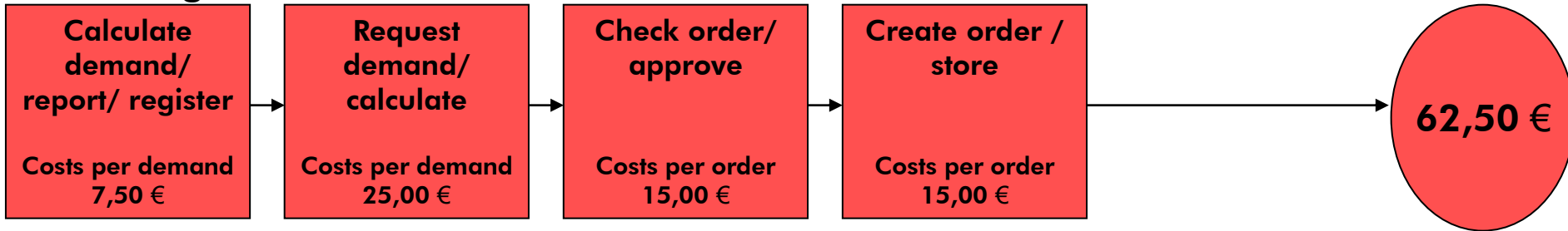


The "Classical" Procurement Process

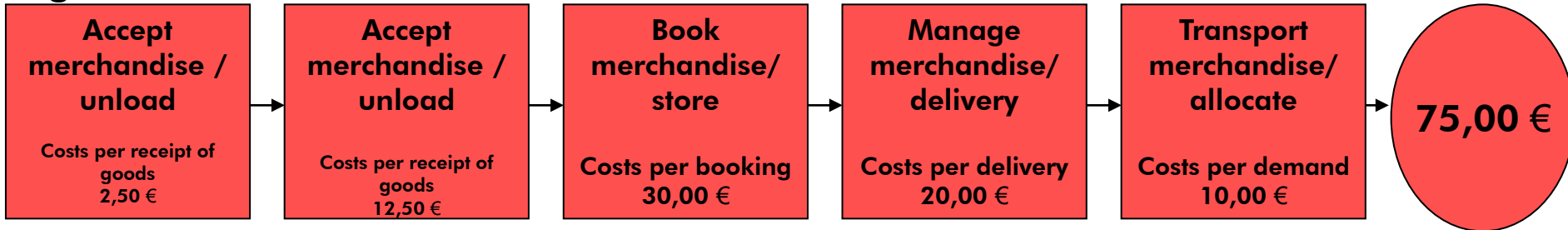
CADENAS

SETTING STANDARDS

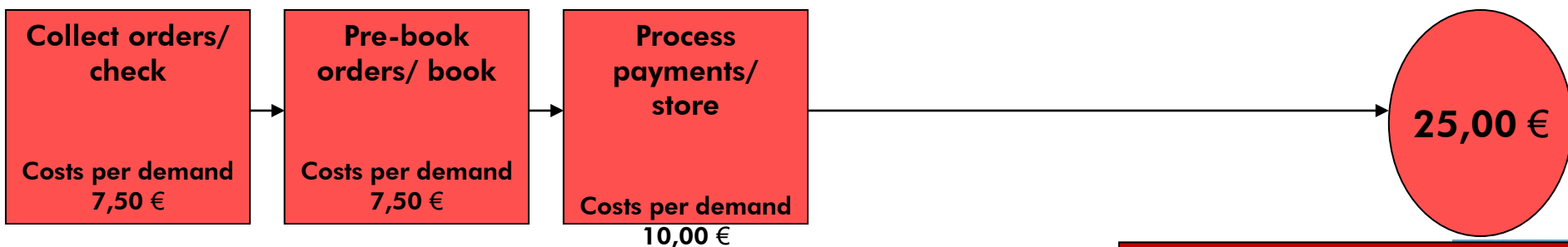
Purchasing Processes



Logistic Processes



Business Processes



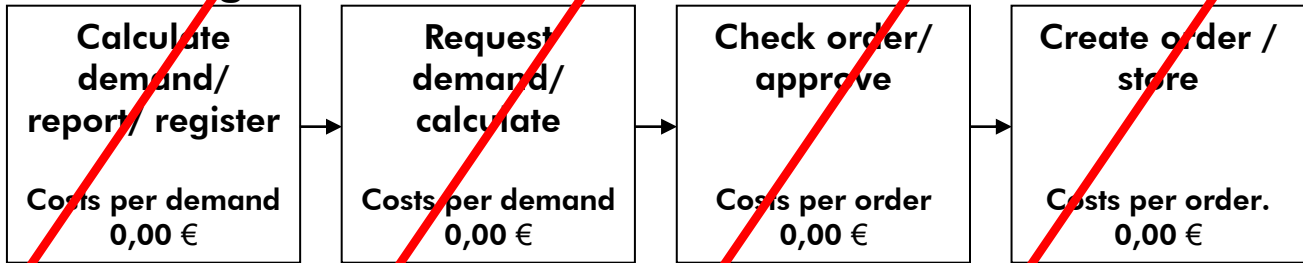
162,50 €

Source: Own display according to H. Schneider, 1998, Outsourcing, pp. 42ff



The "KANBAN" Procurement Process

Purchasing Processes



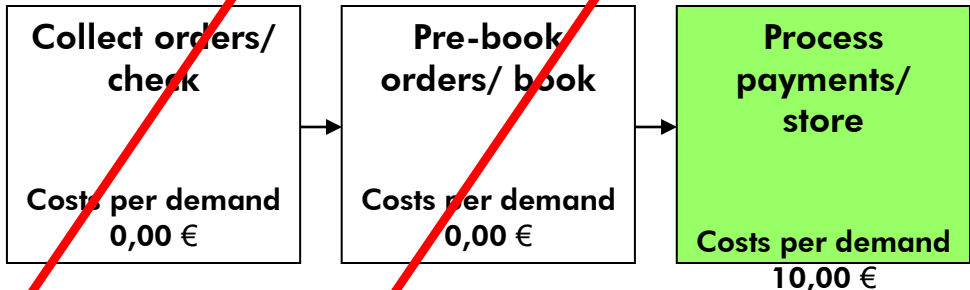
0,00 €

Logistic Processes



0,00 €

Business Processes



10,00 €

10,00 €

Source: Own display according to H. Schneider, 1998, Outsourcing, pp. 42ff





Globally available

CADENAS

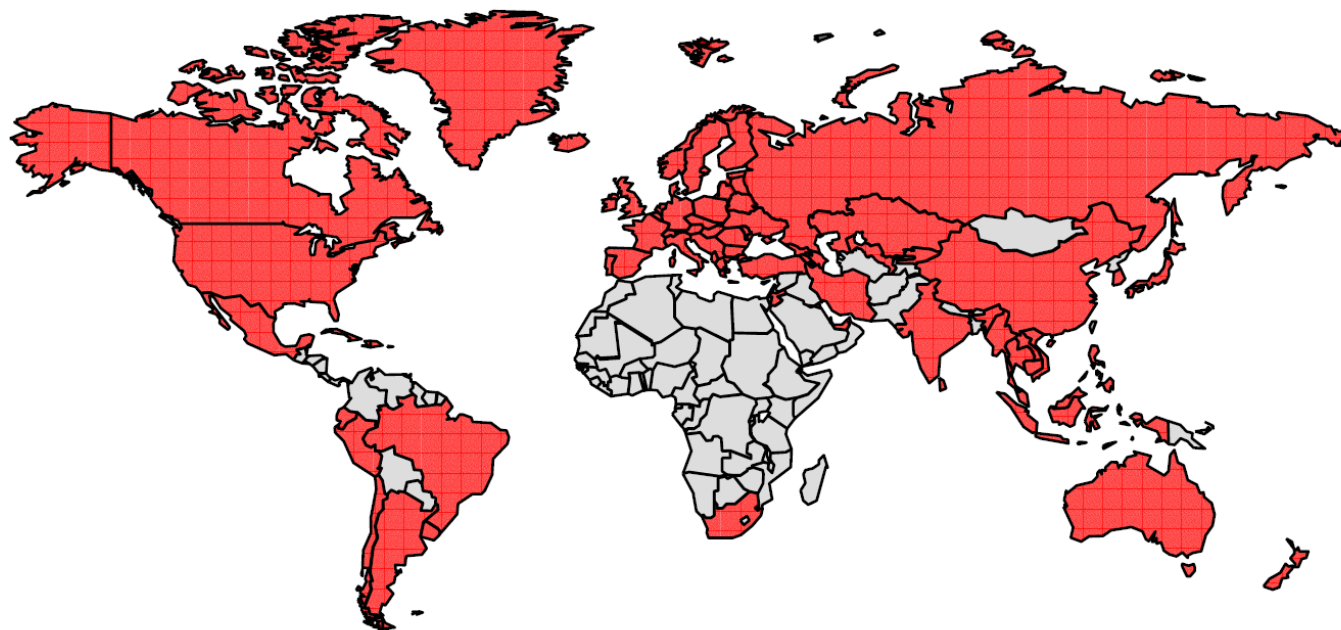
SETTING STANDARDS



Global Player

Wo Sie sind, sind wir auch!



Würth Industrie Service



 Länder, in denen  vertreten ist





CADENAS Parts Management



CADENAS

SETTING STANDARDS



Before



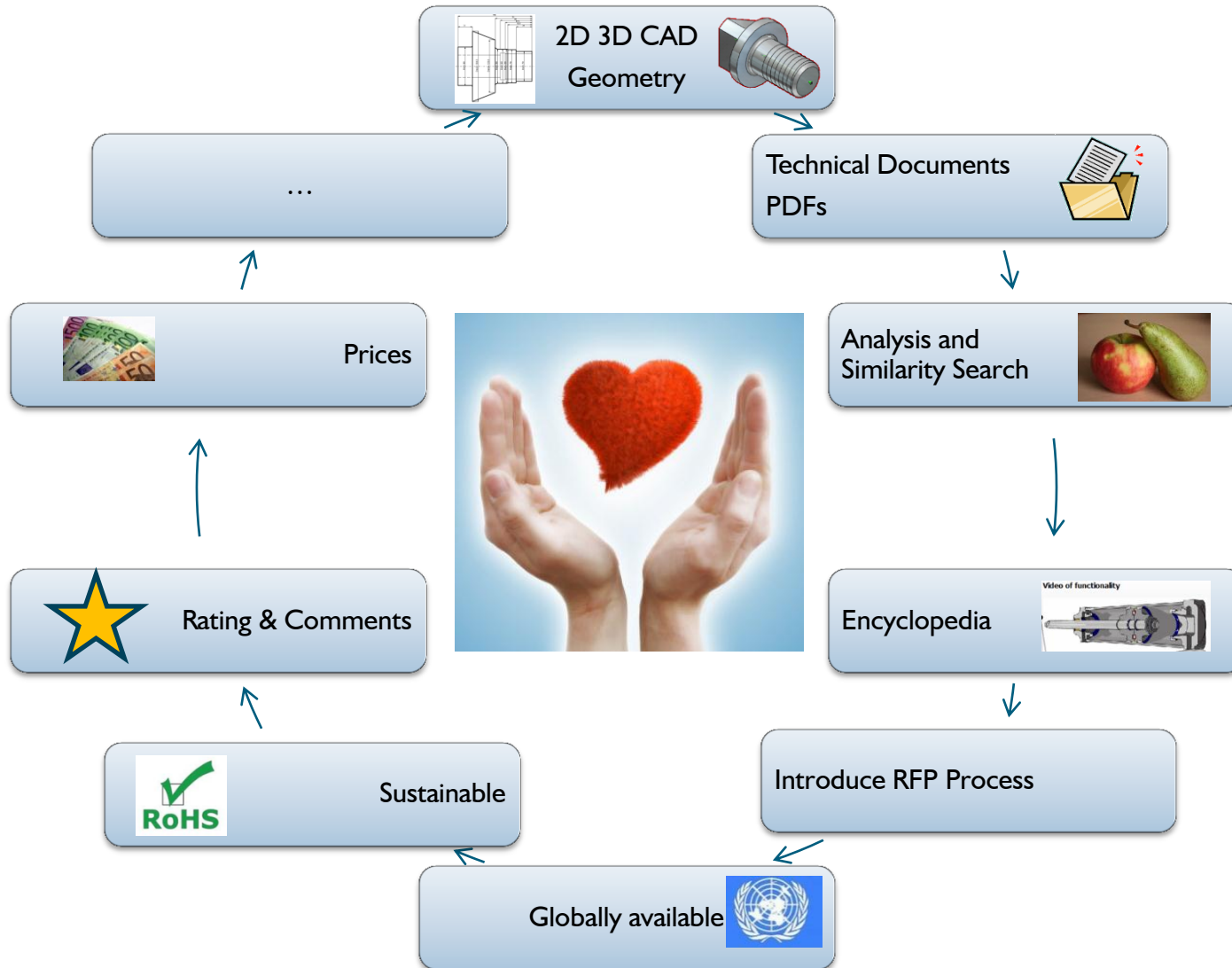
After



Important for PURCHINEERING are intelligence and encompassing eCATALOGS

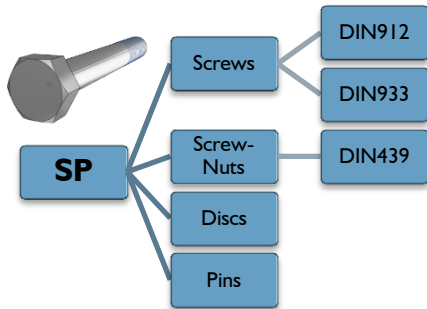
CADENAS

SETTING STANDARDS

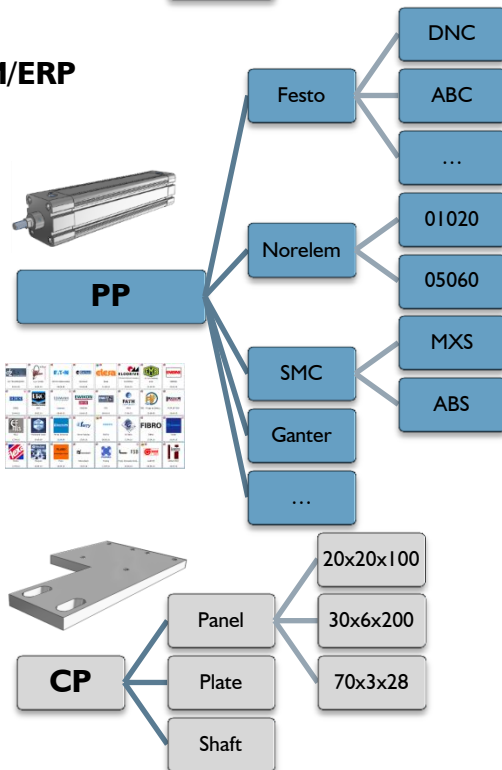




Value Add 4 SP & PP



CAD/PLM/ERP



| | |
|---------------------------|--|
| STANDARDS Supplier | • Possible suppliers for a standard part |
| Alternative MANUFACTURERS | • Search for alternative suppliers for PP • Multisourcing for risk management & emergency plans |
| Clustering Of Sales | • More Inexpensive Sourcing By Common Procurement |
| Change Management | • Recognition End Of Life / Change of supplier data |
| Just-In-Time/ Kanban | • Analysis of SP&PP for JIT/KANBAN availability |
| Cost Mockup 4 Design2Cost | • Generation of a cost mockup • Start of a multisource RFP |
| Technical Documentation | • Reduction of effort for technical documentation. • All documents in all languages |
| Find Instead Of Search | • Easier find with synonyms and without words |
| Clean Masterdata | • Filling of masterdata with supplier original content and information |
| Experience & Comments | • Supplier rating, |
| Avoid Maverick Buying | • Enable preferred parts and suppliers. |
| Environmental Compliancy | • RoHS |
| Global Sourcing | • Analysis of availability of components for a foreign location. Location movements |
| User Behaviour | • What components are trendy ? |

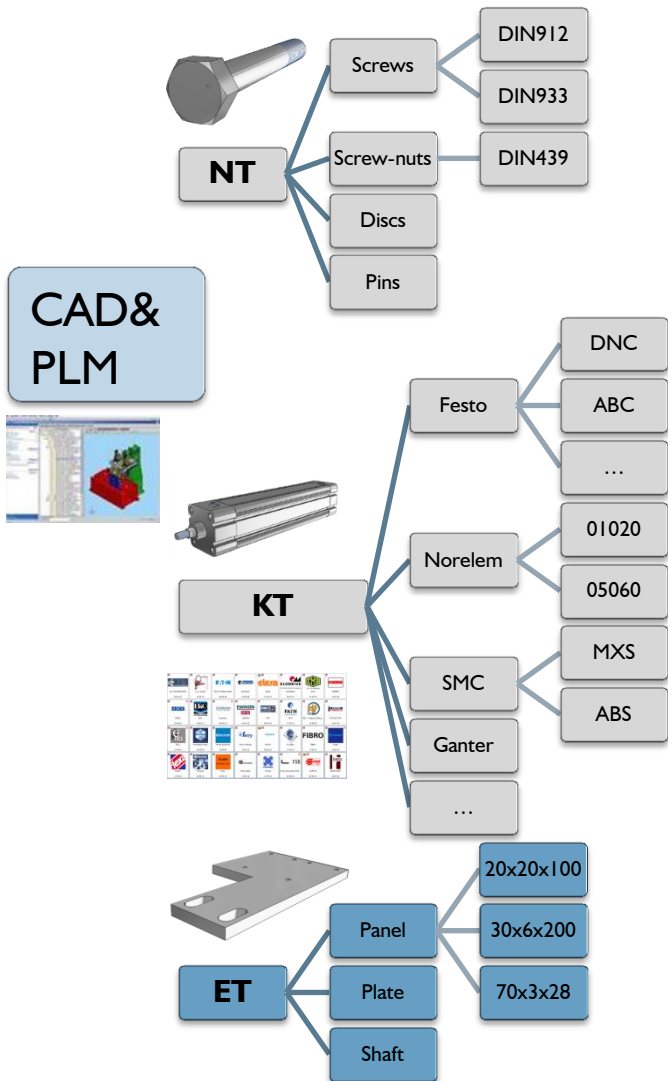




Added value of company parts

CADENAS

SETTING STANDARDS



Projektauswahl

Schlagwortsuche: Suchbegriff(e) für Volltextsuche in allen Katalogen

Herstellerfilter: Herstellername

Make Or Buy

Version

| Kataloge | Klassen | Suche | Favoriten | Verlauf | Symbole | Details | | | | | | | | | | | | | | | | | | | | | | |
|---|---------|-------|-----------|---------|-----------------------------|---------|------------------------------------|------------------------------------|------------------------------------|------------------------------------|------------------------------------|------------------------------------|------------------------------------|-------------------------------------|------------------------------------|------------------------------------|------------------------------------|------------------------------------|------------------------------------|------------------------------------|------------------------------------|------------------------------------|------------------------------------|------------------------------------|------------------------------------|------------------------------------|------------------------------------|------------------------------------|
| <p>Favoriten</p> <ul style="list-style-type: none"> 023012001 023012003 023012010 023012014 023012015 023012016 023012021 0230120231 023012024 023012031 023013005 023013006 023013007 023013008 023013010 023013011 023013012 023019125 023019127 023021003 023021010 023023002 023023007 023027006 023027008 | | | | | <p>Favoriten</p> <p>...</p> | | <p>023012001</p> <p>08.02.2006</p> | <p>023012003</p> <p>08.02.2006</p> | <p>023012010</p> <p>08.02.2006</p> | <p>023012014</p> <p>08.02.2006</p> | <p>023012015</p> <p>08.02.2006</p> | <p>023012016</p> <p>08.02.2006</p> | <p>023012021</p> <p>08.02.2006</p> | <p>0230120231</p> <p>08.02.2006</p> | <p>023012024</p> <p>08.02.2006</p> | <p>023012031</p> <p>08.02.2006</p> | <p>023013005</p> <p>08.02.2006</p> | <p>023013006</p> <p>08.02.2006</p> | <p>023013007</p> <p>08.02.2006</p> | <p>023013008</p> <p>08.02.2006</p> | <p>023013010</p> <p>08.02.2006</p> | <p>023013011</p> <p>08.02.2006</p> | <p>023013012</p> <p>08.02.2006</p> | <p>023019125</p> <p>08.02.2006</p> | <p>023019127</p> <p>08.02.2006</p> | <p>023021003</p> <p>08.02.2006</p> | <p>023021010</p> <p>08.02.2006</p> | <p>023023002</p> <p>08.02.2006</p> |

Projektauswahl
Schlagwortsuche: schraube sechskantschrauben kopf in allen Katalogen
Hersteller filter: Herstellername

Favoriten Make or Buy ... chapter 01

• Cost Mockup

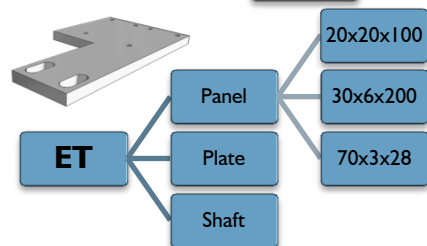
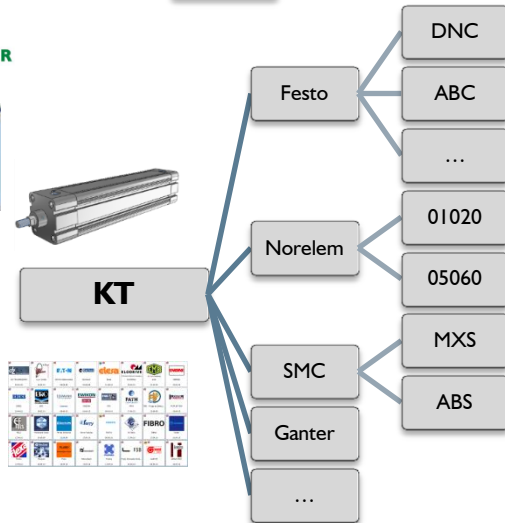
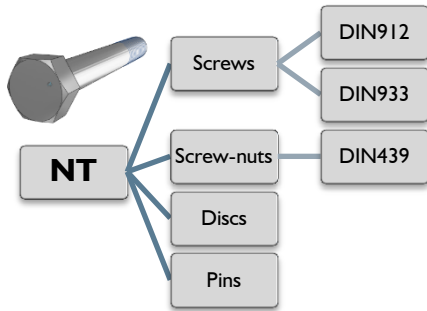
| Kataloge | Klassen | Suche | Favoriten | Verlauf | Symbole | Details |
|---------------------------|---------|-------|-----------|---------|---------|--------------------------|
| Favoriten | | | | | | Favoriten |
| Alternative Lieferanten | | | | | | ... |
| Make or Buy / Cost Mockup | | | | | | 023012001 08.02.2006 |
| chapter 01 | | | | | | 023012003 08.02.2006 |
| chapter 02 | | | | | | 023012010 08.02.2006 |
| Normteilehersteller | | | | | | 023012014 08.02.2006 |
| Werksnormen | | | | | | 023012015 08.02.2006 |
| | | | | | | 023012016 08.02.2006 |
| | | | | | | 023012021 08.02.2006 |
| | | | | | | 0230120231 08.02.2006 |
| | | | | | | 023012024 08.02.2006 |
| | | | | | | 023012031 08.02.2006 |
| | | | | | | 023013005 08.02.2006 |
| | | | | | | 023013006 08.02.2006 |
| | | | | | | 023013007 08.02.2006 |
| | | | | | | 023013008 08.02.2006 |
| | | | | | | 023013010 08.02.2006 |
| | | | | | | 023013011 08.02.2006 |
| | | | | | | 023013012 08.02.2006 |
| | | | | | | 023019125 08.02.2006 |
| | | | | | | 023019127 08.02.2006 |
| | | | | | | 023021003 08.02.2006 |
| | | | | | | 023021010 08.02.2006 |
| | | | | | | 023023002 08.02.2006 |
| | | | | | | 023023007 08.02.2006 |
| | | | | | | 023027006 08.02.2006 |
| | | | | | | 023027008 08.02.2006 |
| | | | | | | 023027010 08.02.2006 |
| | | | | | | 023027014 08.02.2006 |
| | | | | | | 023027062 08.02.2006 |
| | | | | | | 023027063 08.02.2006 |
| | | | | | | 023027081 08.02.2006 |
| | | | | | | 023027082 08.02.2006 |
| | | | | | | 023027083 08.02.2006 |
| | | | | | | 023027084 08.02.2006 |
| | | | | | | 023027085 08.02.2006 |
| | | | | | | 023028004 08.02.2006 |
| | | | | | | 023031002 08.02.2006 |
| | | | | | | 023031003 08.02.2006 |
| | | | | | | 023031004 08.02.2006 |

- GeoSearch -

Letzte Änderung: 08.02.2006 15:10:37
Kategorien:
Sprachen:



Value Add 4 CSP



Semiautomatic Classification

- Much Lesser Effort Than Traditional Way

Intelligent Find

- Revolution Methods To Find Parts Faster and Easier

Cost Mockup 4 Design2Cost

- Simple Calculation Of A Product

Just-In-Time Kanban

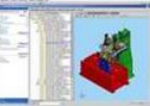
- Reduce Costs

Make Or Buy

- Possible Suppliers For A Selfe Made Part

Support 4 Storage

- Identification Of Parts For Storage Returns





Customers' comments

CADENAS

SETTING STANDARDS

»Unsere Konstrukteure dürfen nicht über die Internetseiten der Lieferanten CAD Daten herunterladen. Neue Teile müssen immer via CADENAS beantragt und zentral freigegeben werden.«

BERND POSTAREMCZAK
SMS SIEMAG AG



»Unsere Lieferanten, die CADENAS eCATALOG unterstützen, erhalten von unserem strategischen Einkauf eine bessere Lieferantenbewertung.«

PETER ZANDER
KUKA SYSTEMS GMBH



»Über CADENAS eCATALOG bekommen wir mit, wenn ein Hersteller Produkte abkündigt und erfahren mit jedem Update alles über neue Produkte.«

PETER DIMMEL
LIEBHERR-WERK BIBERACH GMBH

LIEBHERR





Customers' comments

CADENAS

SETTING STANDARDS

»Aus dem CADENAS eCATALOG heraus legen wir einen neuen Artikelstamm in unserem ERP System für die Bestellung an.«

SASCHA TREML
SIEMENS VAI METALS
TECHNOLOGIES GMBH



»PARTsolutions ist bei Dürr Ecoclean das führende System zur Suche nach Norm-, Katalog- und Wiederholteilen. Wir setzen PARTsolutions mit SAP gekoppelt weltweit in der Konstruktion ein. Jeder Lieferant der einen Katalog in PARTsolutions anbietet, ist klar im Vorteil.«

DÜRR ECOCLEAN GMBH





THANKS
For your attention

Dipl.-Ing. (FH) JÜRGEN HEIMBACH, CEO

Phone.: +49 (0) 821 2 58 58 0 - 0

E-Mail: J.Heimbach@cadenas.de



Property, Copyright and Disclaimer

CADENAS

SETTING STANDARDS

This document and all therein contained information are the sole property of CADENAS AG. The delivery of this documentation or the publication of its contents is considered plagiarism. This document may not be multiplied or displayed to a third party without the exclusive written approval of CADENAS AG. This document and its contents may only be used in accordance with certain purposes.

The information given in this document are not considered an offer. It was made on the basis of the assumptions listed and in good faith. If the reasons associated with these statements are not clear, please contact CADENAS AG in order to further clarify the basic principles.

